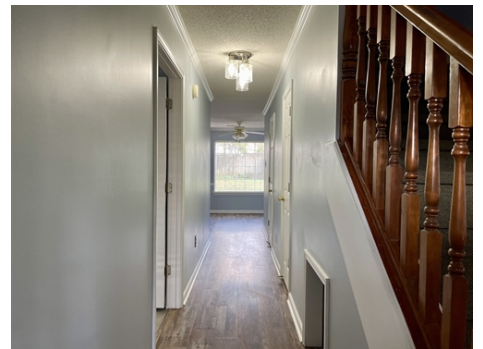


Almost half an acre & in a cove!



\$ 323,900



4699 Bell Ridge Cv, Olive Branch, MS 38654

- » Beds: 4 | Baths: 2 Full, 1 Half
- » Single Family | 2,500 ft<sup>2</sup> | Lot: 20,473 ft<sup>2</sup>
- » TEXT: P97678 to 888-866-9492
- » More Info: [4699BellRidgeCv.IsForSale.com](http://4699BellRidgeCv.IsForSale.com)



Nannette DeShazo  
(901) 870-3685  
[nannettedeshazo@gmail.com](mailto:nannettedeshazo@gmail.com)



Coldwell Banker Collins-Maury  
3276 Goodman Rd E  
Southaven, MS 38672  
(662) 548-2000

Almost half an acre! This beautiful 4-bedroom, 2.5-bathroom home is a perfect mix of comfort and convenience. Located in the back of a quiet cove, it offers privacy and space for kids to play outside! Features Include: 4 Oversized Bedrooms with room for everyone ~ 2.5 Bathrooms including a convenient half bath ~ Walk-In Attic has ample storage space ~ Formal Dining Room perfect for family dinners and entertaining or a home office ~ Breakfast Room is a cozy space for everyday meals ~ Bonus private pet alcove so your 4 legged family members have their own space ~ Walk in laundry with room to sort clothes ~ Walk in storage room in the garage with ample freezer and workshop space ~ Long Front Porch welcoming and charming, perfect for morning coffee ~ Triple Back Patio ideal for outdoor dining, grilling, and relaxation ~ Huge Backyard with plenty of space for kids, pets, and gatherings ~ Updated Flooring and Fresh Paint some new touches to make it move-in ready. Located near the new Cascades in Olive Branch. Reach out today for a showing and make it yours!

